



VINMAN ENGINEERING PVT LTD

ISO: 9001-2008 and TS: 16949-2009 certified

Vinman Engineering Private Ltd.

Established in 1973, manufacturers and exporters of more than 1000 varieties of Sealing Washers, Thrust Washers, Plain Washers, Wave Washers, Spring Washers, Metallic Ring Gaskets in Copper / Non-Asbestos & Steel/Non-Asbestos and wide range of sheet metal components & Spring Washers with in house heat treatment facilities for Automotive Industries, Tractors, Earth Moving Equipment, Heavy Engineering, Electrical Industries, and General applications.

The Company is managed by qualified Engineers and Professionals having vast experience in the field since many years under the dynamic leadership of dynamic Directors.

The Manufacturing set up is located in the heart of Industrial Zone of Mumbai city having ISO/ TS:16949-2009 certification for manufacturing sheet metal components with well equipped modern state-of-art manufacturing machines, latest technology.

The company has been catering to the leading companies based locally and globally, for their Original Equipments as well as after market requirements.

The Company offers cost effective solutions to complex sealing problems. Our integrated technology solutions, materials, manufacturing logistics and operations, and global services offer customers competitive outsourcing advantages, such as access to advanced manufacturing technologies, shortened product time-to-market, reduced total cost of ownership and more effective asset utilization.





PVC coated clamps



Hose clamps

Constant Pressure Hose Clamps manufactured out of high carbon steel and carbon alloy steel for the fuel and liquid rubber pipes/hoses in the Engines and other applications of Automotive and Tractor Industries.



Sealing caps Welch plugs Core plugs

Sealing caps & Core Plugs used in Engines & Transmissions for Automotive & Tractors and manufactured out of Mild Steel, Stainless Steel and Brass and are available in both Cylindrical and Conical type.



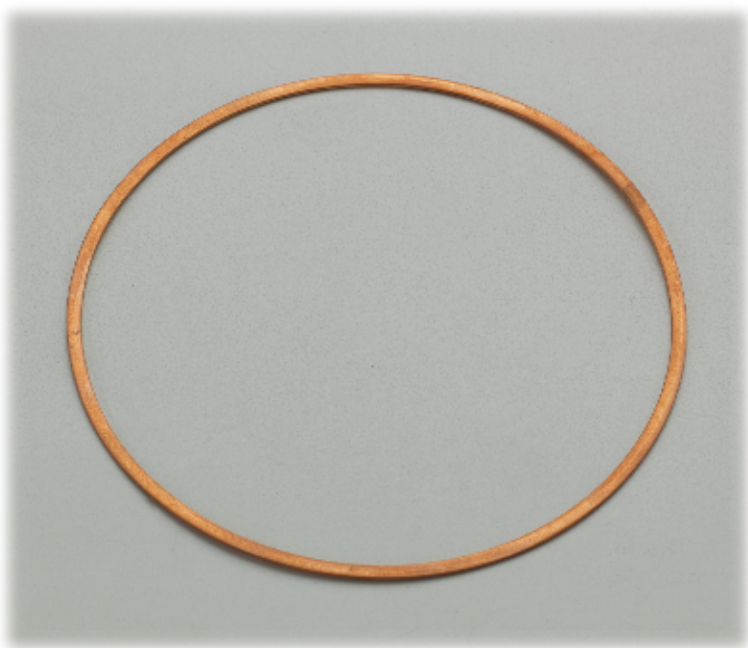
Lock wave washers

Wide range of Lock Washers & Wave Washers, manufactured out of mild steel and carbon steel for Automotive and tractor application



Sealing washers

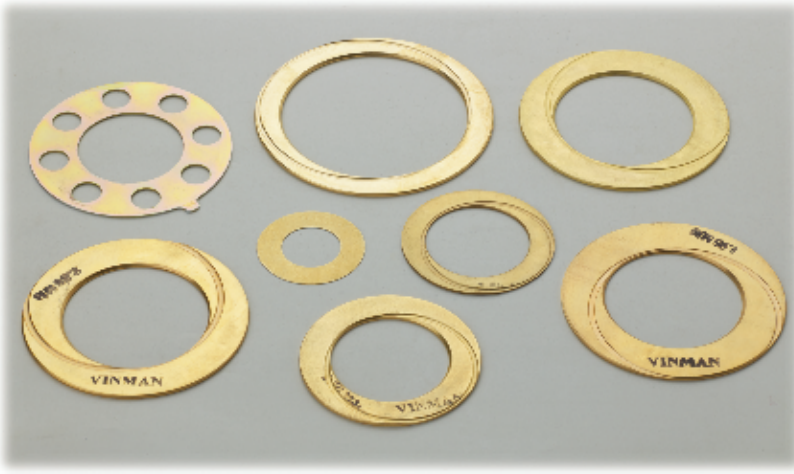
Sealing washers includes metallic ring gaskets, Sealing Rings in Copper and Aluminium as per Indian standards & DIN standard for wide application such as in Automotive, Earth moving equipment, Heavy Engineering & Turbo chargers etc. Also manufacturing Ring Gaskets in Coper/Non Asbestos and Steel/Non Asbestos.



Spring washers

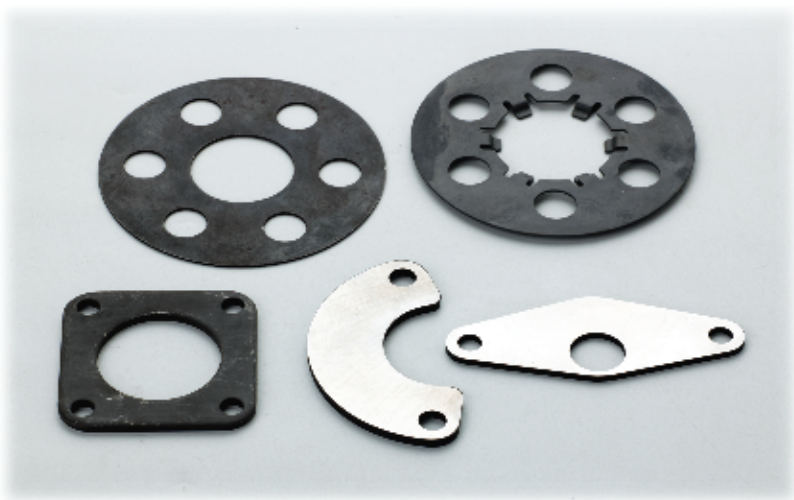
In house manufacturing facilities along with heat treatment is available for manufacturing Spring washers as per Indian and DIN Standards.





Thrust washers

Thrust washers are used in high-wear applications such as Engines, Transmissions, Pumps & Axle assemblies etc., manufactured out of mild & carbon steel with carbo-nitriding, bath nitriding & through-hardening. Also with stainless steel, phosphorous bronze, and brass.



Steel washers

Wide range of Plain washers being manufactured with precision quality conforms to IS, ISO and DIN standards for automotive and tractor applications. Thickness ranges between 0.10mm to 6mm made out of Steel, Stainless Steel, Copper, Aluminium & Brass. It also includes hardened washers in carbon steel as per customers' requirements.

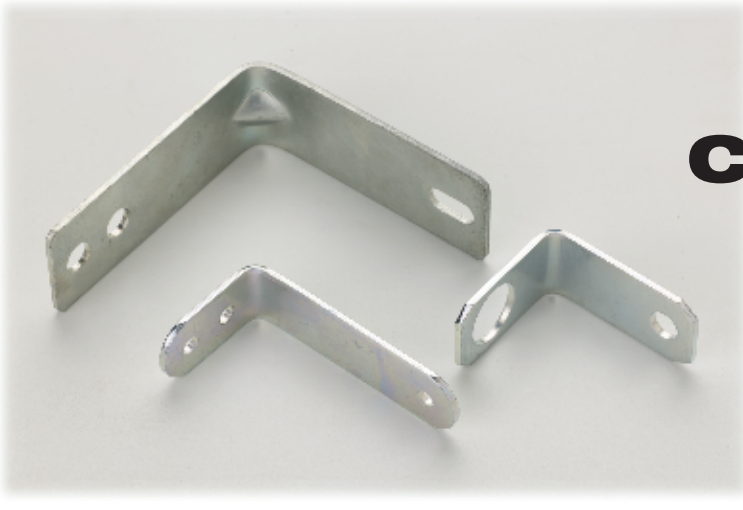




Sheet Metal Components

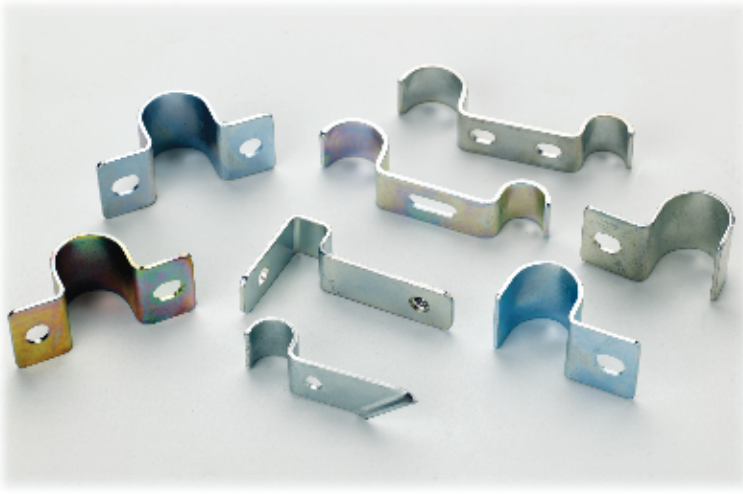
Wide range of Sheet Metal Components used in Automotive Applications, Tractors, Earthmoving equipment, Farm Equipment for their Engines, Transmissions, Axles and Bodies. These are manufactured out of various grades of Steel, Stainless Steel, Copper and Brass, thickness range up to 10mm with tonnage capacity of 200 tone presses. Deep draw components are our speciality and various types of metal forming. In house facilities are available for different type of welding and fabrication.





Clamps

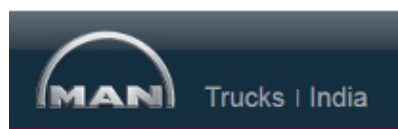
Clamps for Engines & vehicle assembly for Automotive & Tractors & Earth moving equipment. Manufactured out different grades of steel



Clips

Wide range of clips including Push Nuts, U clip Nuts & self threading Nuts are available for Automotive and tractor application, manufactured out of medium and high carbon steel with heat treatment.

Our valued customers



VINMAN ENGINEERING PVT LTD

12, Mittal Industrial Estate, Sanjay Building No.6,
Marol Naka, Andheri-Kurla Road, Andheri (E), Mumbai-400059.
Tel.: 28509151, 28506554 Tel Fax.:28504413
Email :response@vinmanengg.com vinmanegg@mtnl.net.in
Website:www.vinmanengg.com